

# BRINGING TECHNOLOGY UNDERGROUND

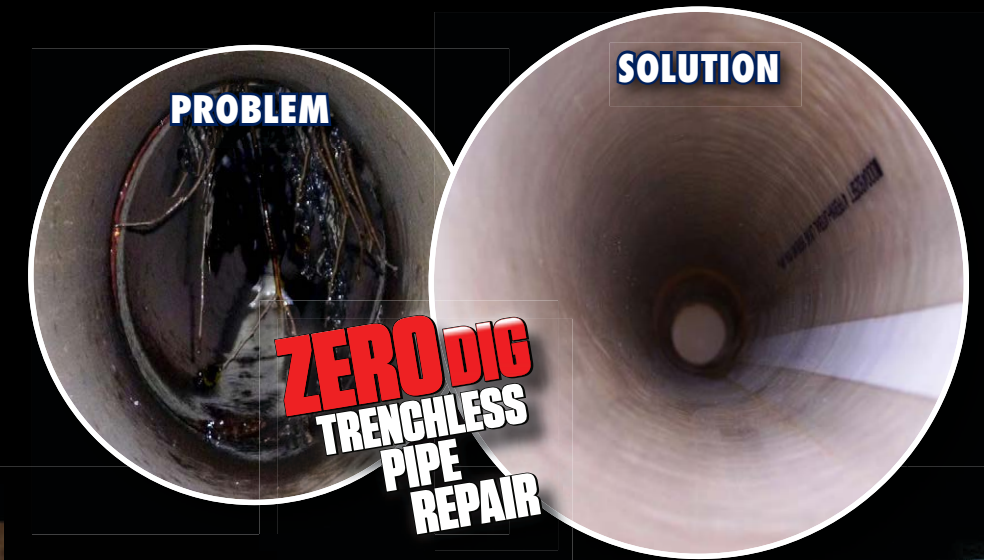
REPAIRS CRACKED OR BROKEN PIPES  
WITHOUT EXCAVATION

ELIMINATES ROOTS AND INFILTRATION

BRIDGES MISSING PIPE SECTIONS /  
STAND ALONE REPAIR

## WHAT WE DO

- Cured-In-Place-Pipe Technology
  - Jetting & Vacuum Service
  - CCTV Pipe Inspection
  - Laser Profile Pipe Inspection
  - Sewer & Drain Cleaning
  - Lift Station Monitoring
- Hydroexcavation & Potholing
- Underground Utility Repairs



## START CONTROLLING YOUR UNDERGROUND REHAB REPAIRS!

As a Certified Perma-Liner™ Installer, GPH Services, is a trained expert on pipe lining materials, methods and techniques to ensure a successful, permanent solution.

GPH Services eliminates the need to excavate and replace the old sewer as was traditionally the case. Instead, the old pipe is lined, creating a brand new pipe within the old one.



Seals broken areas in Cast Iron, PVC, Orangeburg, Clay Pipes and More!



## SECTIONAL POINT REPAIR

The Perma-Liner™ Sectional Lining System is designed for 6" – 60" Diameter Pipelines. The materials are pulled into place through existing manholes and are ambient cured in 3 hours or heat cured in as little as 1 ½ hours. PLI Sectional Point Repair Materials can be installed safely, quickly and efficiently.



## BENEFITS

- ✓ No excavation - eliminates disruptive digging and restoration.
- ✓ Total time of repair is only hours compared to days.
- ✓ 4 to 5 repairs can be completed in one day with a three man crew.
- ✓ In most cases no bypass pumping is needed.
- ✓ Minimum design life is 50 years per ASTM F1216 specifications.
- ✓ Exceeds ASTM F-1216 testing requirements for D790 and D638 Specifications.
- ✓ Reduces job costs – Labor, Equipment, materials, traffic control, bypass pumping, and unforeseen liabilities.
- ✓ Provides materials for diameters up-to 60 inches (1500mm) in diameter and lengths up-to 30 feet (9.1440.m) in length.
- ✓ Meets EPA standards.
- ✓ Utilizes 100% solids epoxy / non-shrinkage.
- ✓ Subjects materials to comprehensive quality assurance procedures, and sample testing.

## STEP-BY-STEP PROCESS

